



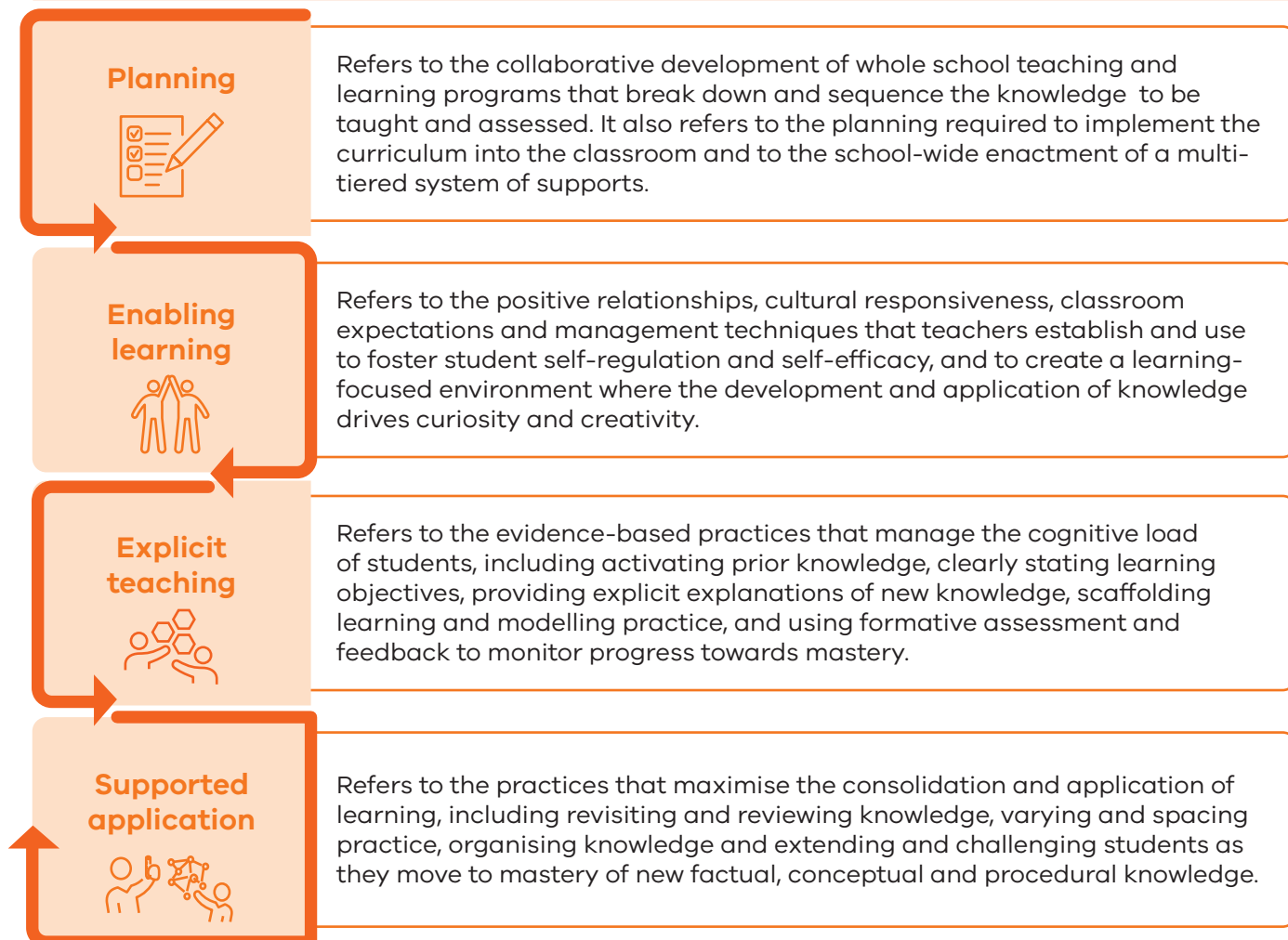


Victorian Teaching and Learning Model 2.0

Elements of learning

 Attention, focus and regulation	 Knowledge and memory	 Retention and recall	 Mastery and application
Refers to learning requiring students' attention and involving active engagement in a supportive and responsive learning-focused environment.	Refers to students processing new information in their working memory, where they connect it with existing knowledge in long-term memory, building mental models that integrate and organise knowledge.	Refers to working memory being able to hold a small amount of information at once (cognitive load). If overloaded, new knowledge won't be effectively stored in long-term memory.	Refers to consistent practice and retrieval, allowing students to develop and demonstrate mastery by retaining knowledge and understanding how to apply it effectively.

Elements of teaching



* Knowledge includes factual, conceptual and procedural knowledge. See AERO (2023), <https://www.edresearch.edu.au/resources/how-students-learn-best>, p.5